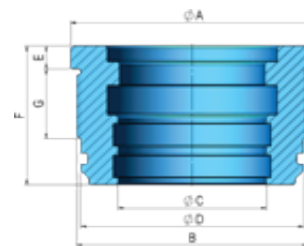




CICROSA
CILINDROS Y CROMADOS PALENTINOS

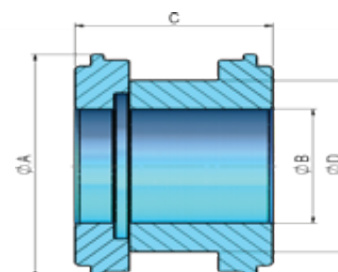
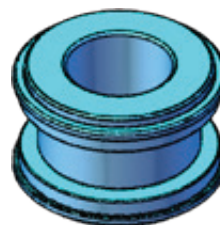
**CABEZA DOBLE EFECTO CON GUÍAS
EXTRA-GUIDANCE D.A. GUIDE-BUSHING
TÊTE DE GUIDAGE À D. E. AVEC EXTRA-GUIDAGE**



REF CODE	CIL CYL	CIL CYL	A	B	C	D	E	F	G	Peso (kg) Weight Poids	Juntas Seals Joints
CDE44456350GP	2"1/2	1"3/4	75	M70x2	44,45	65	10	49	20	0,66	JJCDE44456350GP
CDE50807620GP	3"	2"	90	M82x2	50,8	77,5	10	54	25	1,12	JJCDE50807620GP
CDE508010160GP	4"	2"	115	M107x2	50,8	103	10	60	30	2,99	JJCDE508010160GP
CDE1016015240GP	6"	4"	170	M158x2	101,6	154	20	100	45	8,24	JJCDE1016015240GP

MAT.: F-1140 NITRURADO / NITRIDED / NITRURÉ

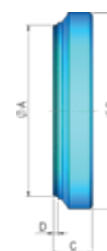
**PISTON DOBLE EFECTO DOS PIEZAS
DOUBLE ACTING PISTON - TWO PIECE
PISTON À DOUBLE EFFET À DEUX PIÈCES**



REF CODE	CIL CYL	CIL CYL	ØA	ØB	C	ØD	Peso (kg) Weight Poids	Juntas Seals Joints
P635025TPMP	2"1/2	1"3/4	62,12	25	40	47,62	0,57	TPM25001875
P762030TPMP	3"	2"	74,5	30	45	57,15	0,90	TPM30002250
P1016040TPMP	4"	2"	99,9	40	50	82,55	2,00	TPM40003250
P1524075TPMP	6"	4"	150,35	75	60	127,00	4,76	TPM60005000

MAT.: F-1140

**TAPA
FLAT BOTTOM
FOND PLAT**



REF CODE	TUBO TUBE	TUBO TUBE	ØA	ØB	C	D	Peso (kg) Weight Poids
F7514P635	2"1/2	3"	63,5	75	14	2	0,44
F10016P762	3"	4"	76,2	100	16	2	0,79
F12018P1016	4"	4"3/4	101,6	120	18	2	1,48
F17025P1524	6"	6"3/4	152,4	170	25	2	4,28

MAT.: F-1110 / ST52