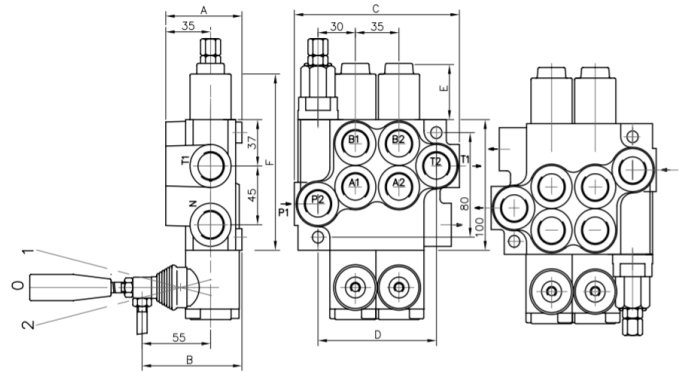


DIRECTIONAL CONTROL VALVES

CI40

SPECIFIC CHARACTERISTICS

- ▶ Nominal flow: 40 l/min
- ▶ Circuit: open
- ▶ Racks: **type A**: double acting
(Optional conversion to S.A.)
- ▶ Control: **type 1**: back by spring



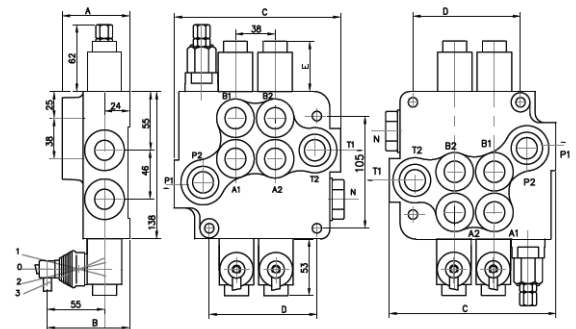
CODES AND DIMENSIONS

Model	Code	A	B	C	D	P	A;B	T	N
1 lever	CI40A1D.3/8	60	80	85	60	G1/2	G3/8	G1/2	G1/2
2 levers	CI40A2D.3/8	60	80	129	97	G1/2	G3/8	G1/2	G1/2
3 levers	CI40A3D.3/8	60	80	164	132	G1/2	G3/8	G1/2	G1/2
4 levers	CI40A4D.3/8	60	80	199	167	G1/2	G3/8	G1/2	G1/2
5 levers	CI40A5D.3/8	60	80	234	202	G1/2	G3/8	G1/2	G1/2
6 levers	CI40A6D.3/8	60	80	269	237	G1/2	G3/8	G1/2	G1/2
1 lever	CI40A1D.1/2	60	80	85	60	G1/2	G1/2	G1/2	G1/2
2 levers	CI40A2D.1/2	60	80	129	97	G1/2	G1/2	G1/2	G1/2
3 levers	CI40A3D.1/2	60	80	164	132	G1/2	G1/2	G1/2	G1/2

CI80

SPECIFIC CHARACTERISTICS

- ▶ Nominal flow: 80 l/min
- ▶ Circuit: open
- ▶ Racks: **type A**: double acting
(Optional conversion to S.A.)
- ▶ Control: **type 1**: back by spring



CODES AND DIMENSIONS

Model	Code	A	B	C	D	P	A;B	T/N	N
1 lever	CI80A1D.1/2	65	79	107	65	G1/2	G1/2	G3/4	G3/4
2 levers	CI80A2D.1/2	80	94	160	103	G1/2	G1/2	G3/4	G3/4
3 levers	CI80A3D.1/2	80	94	198	141	G1/2	G1/2	G3/4	G3/4








*Models 4 to 6 levers: ask for price and availability.

GENERAL CHARACTERISTICS

- ▶ **Monoblock** conception
- ▶ *Environm. Temperature: -40C...+ 60C*
- ▶ *Viscosity: 12 ...800 mm²/s*
- ▶ *Fluid temperature: -15C...+ 80C*
- ▶ *Filtration: 10 at NAS 1638*
- ▶ *Max. Working pressure: 315 bar*
- ▶ *Back pressure: 50 bar*
- ▶ *Actuation force: < 220 N*



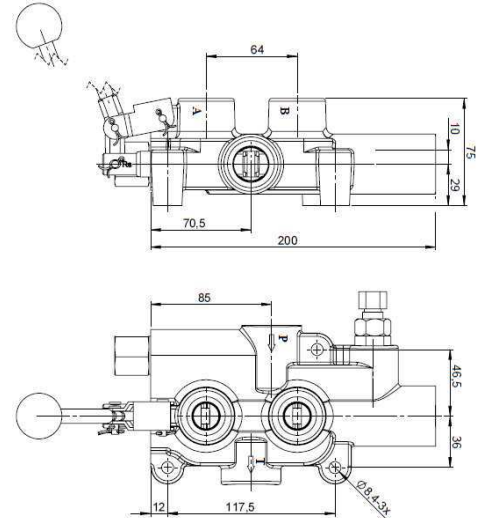
OPTIONS / SPARE PARTS

CI40		CI80	
Code	Description	Code	
DDT	3 permanent position control	DDT-80	
P40	Continuity pressure plug (=carry-over)	P80	
CLP	Closed center plug	CLP-80	
PDH	Lever	PDH	
CIP40SPAL	Lever mount	CIP80SPAL	
CIP40JOY	Joystick	CIP80JOY	
B1	Single acting rack	B2	

DIRECTIONAL CONTROL VALVES FOR SCRAPERS

SPECIFIC CHARACTERISTICS

- ▶ Nominal flow: 80 l/min
- ▶ Max. Pressure: P:250bar / T: 10 bar / A/B:300bar)
- ▶ Circuit: open
- ▶ Racks: **type A**: double acting.
- ▶ Inlets A-B: 1/2" BSP.



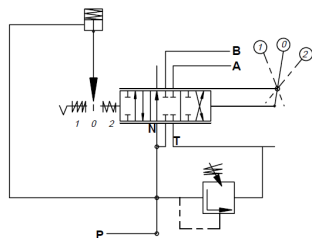
Special directional control valve with trigger for scrapers.

Standard model: **CI80P81**

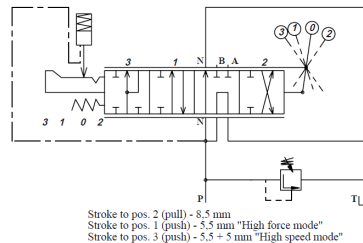
CI80P81-RS features an extremely fast "rapid extend" high speed mode. The **CI80P81-RS** has been designed to reduce system cost by allowing a single stage pump to be used in systems currently using two stage (hi-low) pumps. When extra force is required, the user can manually shift from high speed mode to high force mode. A "soft stop" differentiates between high force and high speed modes.

HYDRAULIC SCHEME

CI80P81



CI80P81-RS



CODES AND DIMENSIONS

Model	Code	P	A;B	T/N	
1 lever	CI80P81	G3/4	G1/2	G3/4	
1 lever	CI80P81-RS	G3/4	G1/2	G3/4	